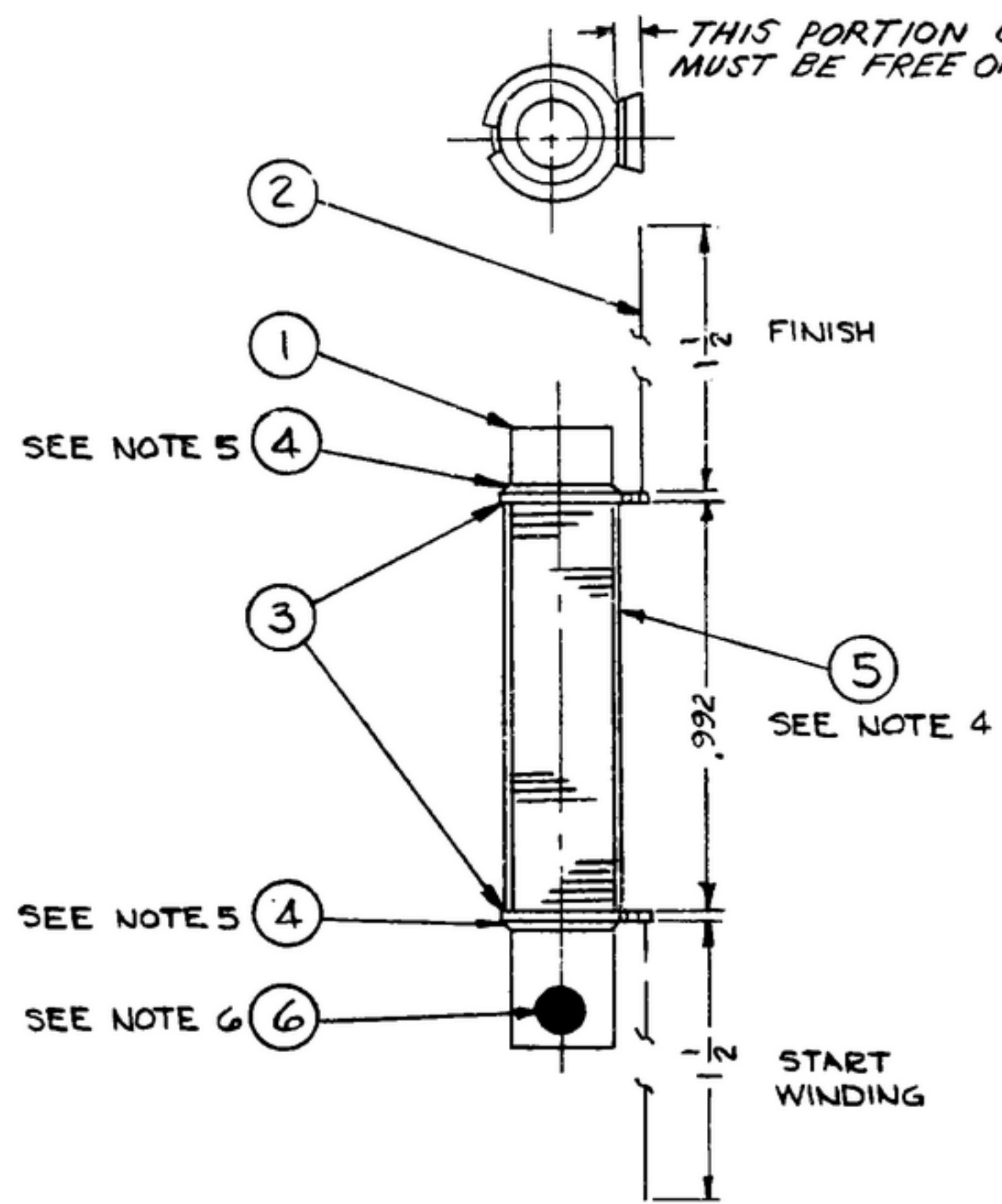


NOTICE: WHEN GOVERNMENT DRAWINGS, SPECIFICATIONS, OR OTHER DATA ARE USED FOR ANY PURPOSE OTHER THAN IN CONNECTION WITH A DEFINITELY RELATED GOVERNMENT PROCUREMENT OPERATION, THE UNITED STATES GOVERNMENT THEREBY INCURS NO RESPONSIBILITY FOR ANY OMISSION, MISINTERPRETATION, AND THE FACT THAT THE GOVERNMENT HAS MADE REVISIONS, PUBLISHED, OR IN ANY WAY SUPPLIED THE SAID DRAWINGS, SPECIFICATIONS, OR OTHER DATA IS NOT TO BE REGARDED BY IMPLICATION OR OTHERWISE AS TO ANY INFERRED LICENSING THE HOLDER OR ANY OTHER PERSON OR CORPORATION, OR CONVEYING ANY RIGHTS OR PERMISSION TO MANUFACTURE, USE, OR SELL ANY PATENTED INVENTION THAT MAY IN ANY WAY BE RELATED THERETO.

"THIS DOCUMENT HAS BEEN PURCHASED BY THE GOVERNMENT AND MAY BE REPRODUCED AND USED IN CONNECTION WITH ANY GOVERNMENT PROCUREMENT OR MAINTENANCE OPERATION."

NOTE: \*FOR INFORMATION ONLY. CONTRACTOR MAY AT HIS OPTION DEVIATE FROM THESE PROCESS DETAILS

SWE APPROVAL		REVISIONS			
SY	FR	SYB	DESCRIPTION	DATE	APPROVAL
M	10042-17	A <sub>1</sub>	REVISED & REDRAWN	16 DEC 59	42428-PC-59-A -31 REV PHE



- NOTES:
1. COIL TO BE WOUND TO MEET ELECTRICAL REQUIREMENTS SPECIFIED ON SM-D-249097.
  2. TYPICAL WINDING DATAS:  
NO. OF TURNS: 15  
TYPE OF WIND: SINGLE LAYER VARIABLE PITCH
  3. WIRE: SINGLE STRAND OF NO. 26 AWG WIRE WITH HEAVY POLYURETHANE FILM INSULATION, DRAWN & ANNEALED COPPER. AS SUPPLIED BY BELDEN MFG. CO., CHICAGO, ILL. OR EQUAL.
  4. THE COIL WINDING SHALL BE SUFFICIENTLY COATED TO FIRMLY ANCHOR ALL WIRES. COATING MATERIAL (ITEM 5) TRANSPARENT "Q" MAX. #A27 TO BE SUPPLIED BY COMMUNICATIONS PRODUCTS CO. INC., MARLBOROUGH, N.J. OR EQUAL.
  5. CEMENT TERMINAL (ITEM 3) TO COIL FORM (ITEM 1) BY APPLYING THE BONDING AGENT #R313 (ITEM 4) ONLY ON THE OUTER SIDE OF TERMINALS ADJACENT TO THE EXTREMITIES OF THE COIL FORM AS SHOWN. BONDING AGENT #R313 AS SUPPLIED BY CARL H. BIGGS CO., LOS ANGELES, CALIF. OR EQUAL.
  6. FOR IDENTIFICATION USE COLOR CODING LACQUERS (ITEM 6) AS SUPPLIED BY CAPITAL CHEMICAL CO., CHICAGO, ILL. OR EQUAL. APPLY VIOLET COLOR DOT (1/8 DIA.) ONTO COIL FORM LOCATED AS SHOWN.
  7. S.W.E. WINDING PROCEDURE FOR 16-32 MC. R.F. COIL SPECIFIED ON 12P205238.

* SWE PART NO	ITEM	REQD	PART NO.	DESCRIPTION	MATL	MATL SPEC	NOTES
<del>20S111266-8</del>	6	AS REQ'D		LACQUER, COLOR CODING (VIOLET)		TT-L-31	6
<del>20S110664-5</del>	5	AS REQ'D		LACQUER			4
<del>11S130315-7</del>	4	AS REQ'D		ADHESIVE			5
	3	2	SM-B-85398	TERMINAL			5
<del>30S130131-26</del>	2	1	SM-B-283288-1	WIRE, MAGNET (10 IN. TYP)		MIL-W-583	3
	1	1	SM-B-249171-3	FORM, COIL			

LIST OF MATERIAL

UNLESS OTHERWISE SPECIFIED				EDLINE RADIO CO.		COIL ASSY		DEPARTMENT OF THE ARMY SIGNAL CORPS ENGINEERING LABORATORIES FORT MONMOUTH NEW JERSEY	
DIMENSIONS ARE IN INCHES				CEDAR RAPIDS, IOWA					
TOLERANCES ON FRACTIONS DECIMALS ANGLES				14214-PH-51-93					
± 1/64 ± .005 ±				SIGNAL CORPS					
DRAWN BY L. Briggs				REVIEWED PME					
CHECKED BY BG				APPROVED HLY PME					
NEXT ASSY USED ON				DATE 11 MAR 58		SCALE 2/1			
* SWE APPLICATION				ENG APPROVAL				SM-B-283288	